

暮らしように泊まれる宿

# ゲストハウスcarpe広島己斐

: 8 1 - 7 0 - 5 4 2 3 - 0 0 8 0

Guest House carpe Hiroshima Koi E-mail:carpehiroshimakoi@yahoo.co.jp

## ROOM RATE

|                         |   |           |
|-------------------------|---|-----------|
| Dorm Room               | 2,500 JPY ( shared Room ) / per night         |           |
| Dorm Room               | 12,000 JPY ( share Room ) / per 6 nights      |           |
| Private Room            | 8,000 JPY ( 4persons ) / per night            |           |
| Private Room            | 7,500 JPY ( 3persons ) / per night            | ATTENTION |
| Private Room            | 7,000 JPY ( 1 ~ 2persons ) / per night        | ATTENTION |
| Dorm Room ( Long Stay ) | 1,200 JPY ( more than 30 nights ) / per night |           |

## CASH ONLY



【Dorm : co-ed room】

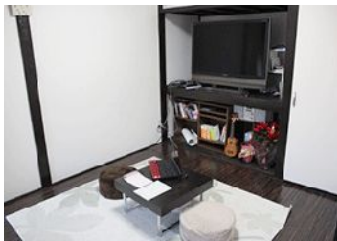
check-in 4PM ~ 10PM /



【Dorm : for women only】

check-out ~ 11AM

## FACILITIES



【Lounge】



【Kitchen】

- Free for all guests ... WiFi, standard internet service, Kitchen Utensils, shower room, coffee, tea
- Fee-based services ... washing machine (200JPY), towel (200JPY), mineral water (100JPY)
- Smoking ... All room and all halls are non-smoking. There is no smoking space.

## ACCESS

Only 1-min walk from JR Nishi Hiroshima Station!!

From JR Hiroshima Station ... approx. 7 min by JR train

From Hiroshima Airport ... (via Hiroshima St.) 45 min by airport limousine + 7 min by JR train

/ (via Bus Center) 53 min by airport limousine + 20 min by Hiroden streetcar

## LOCAL SIGHTSEEING

MAP ( [http://guesthousecarpe.net/?page\\_id=9](http://guesthousecarpe.net/?page_id=9) )

World Heritage "A-Bomb Dome" ... approx. 20 min by Hiroden Streetcar

World Heritage "Miyajima & Itsukushima Shrine" ... approx. 50 min by JR train & Ferry

## RESERATIONS

Please contact us in Japanese or in English. Payment : cash only (JPY)

HP ... <http://guesthousecarpe.net/>

E -mail ... [carpehiroshimakoi@yahoo.co.jp](mailto:carpehiroshimakoi@yahoo.co.jp)