

暮らしように泊まれる宿

ゲストハウスcarpe広島己斐

: 8 1 - 7 0 - 2 6 1 4 - 5 2 7 4

Guest House carpe Hiroshima Koi E-mail:carpehiroshimakoi@yahoo.co.jp

ROOM RATE

Dorm Room	1,800 – 2,700 JPY (shared Room) / per night	
Private Room	8,000 -10,000 JPY (4persons) / per night	ATTENTION
Private Room	7,500 -10,000 JPY (3persons) / per night	ATTENTION
Private Room	7,000 -10,000 JPY (1 ~ 2persons) / per night	ATTENTION
Dorm Room (Long stay)	2,000 JPY (more than 14 nights) / per night	
Dorm Room (Long Stay)	1,500 JPY (more than 31 nights) / per night	

CASH ONLY



【Dorm : co-ed room】

check-in 4PM ~ 10PM /

【Dorm : for women only】

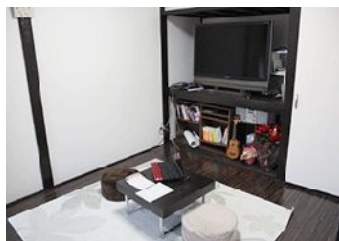
check-out ~ 11AM

【Breakfast service】

5AM ~ 10AM

No additional fee

FACILITIES



【Lounge】



【Kitchen】

- Free for all guests ... WiFi, Kitchen Utensils, shower room, bath towel(for rent), coffee, tea
- Fee-based services ... washing machine (200JPY), mineral water (100JPY)
- Smoking ... All room and all halls are non-smoking. There is no smoking space.

ACCESS

Only 1-min walk from JR Nishi Hiroshima Station!!

From JR Hiroshima Station ... approx. 8 min by JR train

From Hiroshima Airport ... (via Hiroshima St.) 45 min by airport limousine + 8 min by JR train

/ (via Bus Center) 53 min by airport limousine + 15 min by Hiroden streetcar

LOCAL SIGHTSEEING

MAP (http://guesthousecarpe.net/?page_id=9)

World Heritage "A-Bomb Dome" ... approx. 15 min by Hiroden Streetcar

World Heritage "Miyajima & Itsukushima Shrine" ... approx. 40 min by JR train & Ferry

RESERATIONS

Please contact us in Japanese or in English. Payment : cash only (JPY)

HP ... <http://guesthousecarpe.net/>

E -mail ... carpehiroshimakoi@yahoo.co.jp